

American Cormo Quality

Cormo sheep produce exquisite fine wool that is sought after by spinners, knitters, felters and other fiber artists.

Its bright, consistent white wool will dye true, and the even, well-defined crimp produces a "bouncy", elastic product. It is soft enough to be worn against the skin.

Cormos are a mid-sized sheep that are easy to manage, suited to a wide variety of climates, and an excellent choice for small farms as well as range conditions.

This remarkable breed was developed in the 1960s in Tasmania, Australia by selectively crossing Superfine Saxony Merino ewes with Corriedale rams. Results were measured by exacting scientific standards.

In 1976, 12 bred ewes and 2 rams were imported. In 1979, 50 ewes and 5 rams were imported to the United States. This was the basis of the American Cormo Sheep Association.

Contact your local Cormo breeder or the association for more information.



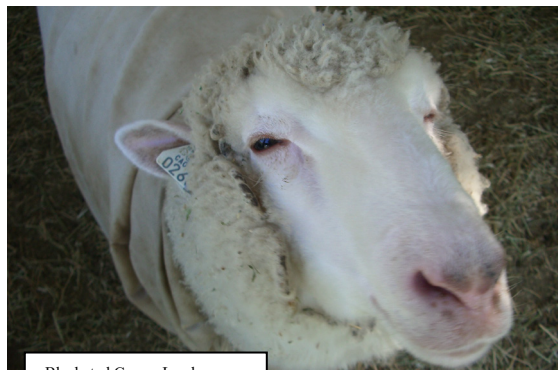
Running Wild Ranch Montana

For More Information Contact

George Saunders, President
222386 Pico St
Grand Terrace, CA 92313
(909) 783-0196
saundergm@webuniverse.net
www.socalwool.com

Charlotte Carlat, Treas./Registrar
101 E. River Rd.
Broadus, MT 59317
(406) 427-5378
DemooyCarlat@gmail.com

Find A Cormo Sheep Breeder In Your Area
www.CormoSheep.com



Blanketed Cormo Lamb



The American Cormo Sheep Association

A Non-Profit Corporation



Wethers and Rams

ACSA Registry Established In 1976

www.CormoSheep.com



Fine Featured Ewes

American Cormo Fleece



Bright White Color

17 to 23 Micron Diameter

3.5 to 5 Inch Staple

Soft "hand"

Consistent Color and Quality

Even, Well-defined Crimp

Elastic Fibers

Fleece Average Weight:

Ewes 10 lbs

Rams 14 lbs

Over 70% Yield



2014 First and Reserve Champion
Kentucky Sheep and Fiber Festival – Alyce Grover

American Cormo Sheep

Excellent White Fleece Production and Quality

Hardy

Moderate Average Size:

Ewes 150 lbs

Rams 200 lbs

Strong Flocking Instinct

High Fertility

Good Mothering Instinct

Suited to a Variety of Climates



Becky and Ron loading a ewe lamb

The American Cormo Sheep Association

100 E RIVER RD.
BROADUS, MT 59317
(406) 427-5449

Supporting and Promoting
Breeders of the American
Cormo Sheep



Your Local Breeder

Name: _____

Tel: _____

E-Mail: _____